

## Final Report on 1949 Farm Crops

The Federal Crop Reporting Board added up figures on output from the nation's farms and concluded recently that 1949 crop production was the second greatest in history.

In a final crop summary of the year, the board said the volume of 1949 crop production was 132 per cent of the 1923-32 average, 5.5 points below the 1948 record. The total acreage planted to 52 crops was the largest since 1933, at 369,400,000 acres. Farmers harvested their crops from 356 million acres—a planted area exceed-

ed only in 1930 and 1932.

The "huge outturn" this year, according to the board, "was the result of uniformly large production of most crops, with only a few either outstandingly larger or smaller than usual." Record production in 1949 was achieved only by rice, dry beans and pears.

Midwest corn belt farmers turned out a 3,378-million-bushel corn crop, a near record. Other crops in the near-record group included soybeans, sorghum grain and tree nuts. In the "relatively large" category were cotton and cottonseed, wheat, oats, flaxseed,

tobacco, apples, peaches, cherries, hops, cranberries, sugar cane for sugar, and truck crops.

Crops which exceeded average in 1949, but failed to hit new highs, were potatoes, broomcorn, plums and prunes. Output of hay, peanuts, sugar beets, citrus fruits, as a group, and grapes was about average. Smaller-than-average yields were reported for barley, rye, buckwheat, popcorn, sorghums, forage and silage, dry peas, cow peas, velvet beans, sweet potatoes, sorgo and sugar cane syrup, apricots and maple products.

The board said yields per acre were above average for most crops, though wheat, flaxseed and dry peas were notable exceptions. New high yields were set by grain sorghums, dry beans and soybeans. The composite yield of all crops, on an acreage basis, was 142 per cent of the 1923-32 average, second only to the 1948 acreage yield record of 151 per cent.

Details of the report follow (in bu., unless otherwise specified, 000 omitted):

	1949	1948	Average 1923-47
Corn	3,377,790	*3,681,793	2,787,628
Wheat, all	1,146,463	1,313,534	991,950
Winter wheat	901,668	1,007,863	726,553
All spring wheat	244,795	305,671	265,397
Durum wheat	38,864	44,680	36,256
Other spring wheat	205,931	260,991	229,141
Oats	1,322,924	1,493,304	1,234,082
Barley	238,104	315,894	304,741
Rye	18,697	26,449	35,109
Flaxseed	43,664	54,529	30,102
Rice	89,141	85,056	62,944
Sorghums	152,630	131,596	102,398
Cottonseed (tons)	6,477	5,945	4,631
Hay, all (tons)	99,305	99,471	99,539
Soybeans	222,305	223,006	148,381
Peanuts (pounds)	1,853,140	2,338,470	1,845,718
Potatoes	401,962	454,654	393,408
Tobacco (pounds)	1,990,129	1,980,325	1,718,375
Sugar cane (tons)	7,723	6,778	5,952
Sugarbeets (tons)	10,168	9,422	10,145

\*Revised final figure.



# Quincy

COMPRESSORS

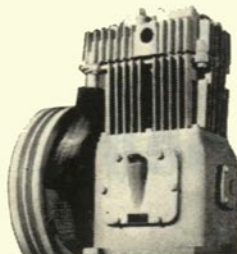
FOR MOUNTING ON THE  
UNIVERSAL 'Jeep'

Compressed air goes with you wherever a 'Jeep' can travel — thanks to the new Quincy Model 216-S Compressor. Any 'Jeep' equipped with a power take-off becomes a portable air compressor unit simply by sliding the Quincy Compressor Model 216-S into the slots vacated by the rear seat. Anyone can install the entire assembly in less than 30 minutes. No special tools or technique required. Like the 'Jeep' itself, Quincy Model 216-S is built to withstand severe use over a long period of time. Together as a unit, they provide compressed air "on the spot" when and where it is needed. Get details from your 'Jeep' dealer . . . or write Quincy Compressor Co., Dept. T-1, Quincy, Illinois

**QUINCY COMPRESSOR CO.**  
QUINCY, ILLINOIS

Branch Offices: New York • Philadelphia • Chicago • St. Louis • Dallas • San Francisco

*Compressed  
air  
goes  
anywhere*



USE COMPRESSED AIR  
FOR

Spray-Painting Houses, Barns

Tree Pruning

Spraying Hydrants

Lubricating Equipment

Spraying Bridges

Blowing Off Machinery

Monument and Cemetery Work

Spray-Painting Fences

and many more jobs

## Harvester Buys Columbus Property

The purchase by International Harvester of an 11-acre tract of land located on Kinnear Road, Columbus, Ohio, has been announced by N. G. Hites and C. L. Sears, managers of the company's general and motor truck sales offices. The property adjoins a 6-acre plot purchased by the company in 1947.

The purchase, approved by Mercer Lee, Chicago, vice-president in charge of supply and inventory, was made from the Adco Realty Co. and C. M. Barr of Columbus.

Harvester's present plans call for the eventual construction of a building to house a service parts depot, a machine transfer operation and a general sales office on the 17-acre tract. Work on the new building will probably not start before early 1951.



**Good equipment  
makes a good farmer better.**

IMPLEMENT & TRACTOR