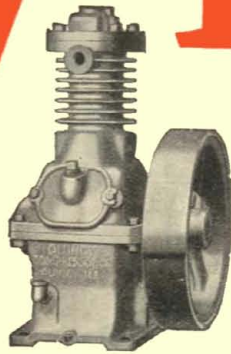
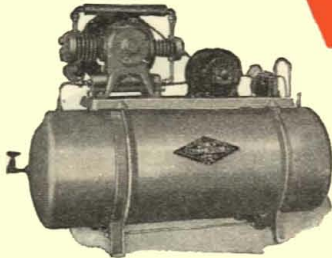


V-Belts

Model G-18

Two-Stage Automatic Unit. $\frac{3}{4}$ H.P. Motor. Single V-Belt. Tank, 20 x 48—65 Gallons. 175-lb. cut-off pressure. $3\frac{3}{4}$ cu. ft. displacement. 1 H.P. for $4\frac{1}{2}$ cu. ft. or $1\frac{1}{2}$ H.P. for 6 cu. ft. 25 foot hose with chuck.

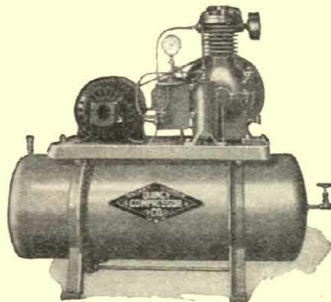


Model A

An air cooled compressor made in 8 sizes, with displacements ranging from 1 to 27 cu. ft. per minute and requiring motors of from $\frac{1}{4}$ H.P. to 5 H.P. "V" type pulley furnished as special equipment.

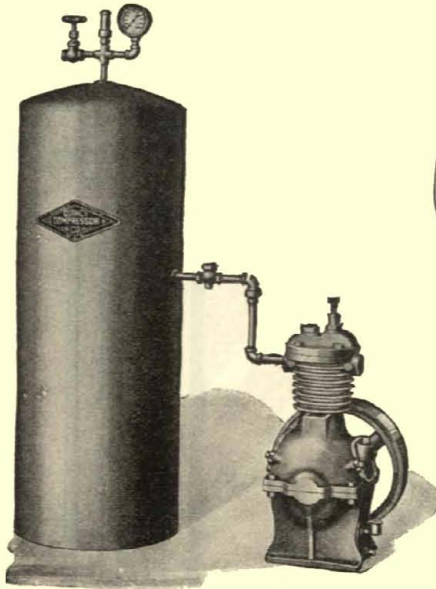
Model F-1

Single-Stage Automatic Unit. $\frac{1}{2}$ H.P. Motor. Single V-Belt. Tank, 14 x 36—24 Gallons. 150-lb. cut-off pressure. 2.8 cu. ft. displacement. $\frac{3}{4}$ H.P. Motor for 4.2 cu. ft. displacement. 25 foot hose with chuck.



Model B

Tank Outfit, complete with 25 ft. hose and chuck. Equipment includes any of five model A compressors piped up to proper size tank, with check valve, pressure gauge, safety valve, drain cock, shut off valve; hand unloader in compressor head.



are saving users of Quincy Compressors 20% to 30% on power—a continuous, every-day saving that comes right out of the overhead.

And get this: Quincys were the very first air compressors to have V-Belts.

V-Belts save power because they are run loose but hold anyway. There is no undue tension on bearings, no idler to eat up power, no slippage, no jumping off the pulleys.

The remarkably quiet operation of Quincy Compressors is proof positive of their excellent design and workmanship. Their long life and low up-keep substantiate this proof.

Learn *all* about Quincy Compressors and you will buy a Quincy. Write for complete information—or use the coupon.

Quincy Compressor Company,
223 Maine St., Quincy, Ill.

Please send complete story about Quincy Compressors.

Name

Address

City..... State.....

N-32

QUINCY COMPRESSOR CO.

223 Maine Street



Quincy, Illinois

SERVICE AND SALES OFFICES

Atlanta, Ga.
Birmingham, Ala.
Buffalo, N. Y.

Chicago, Ill.
Cincinnati, O.
Cleveland, O.

Dallas, Tex.
Detroit, Mich.

Houston, Texas
Kansas City, Mo.

Memphis, Tenn.
Moline, Ill.
Newark, N. J.

New Orleans, La.
St. Louis, Mo.
Washington, D. C.

Also in other important centers