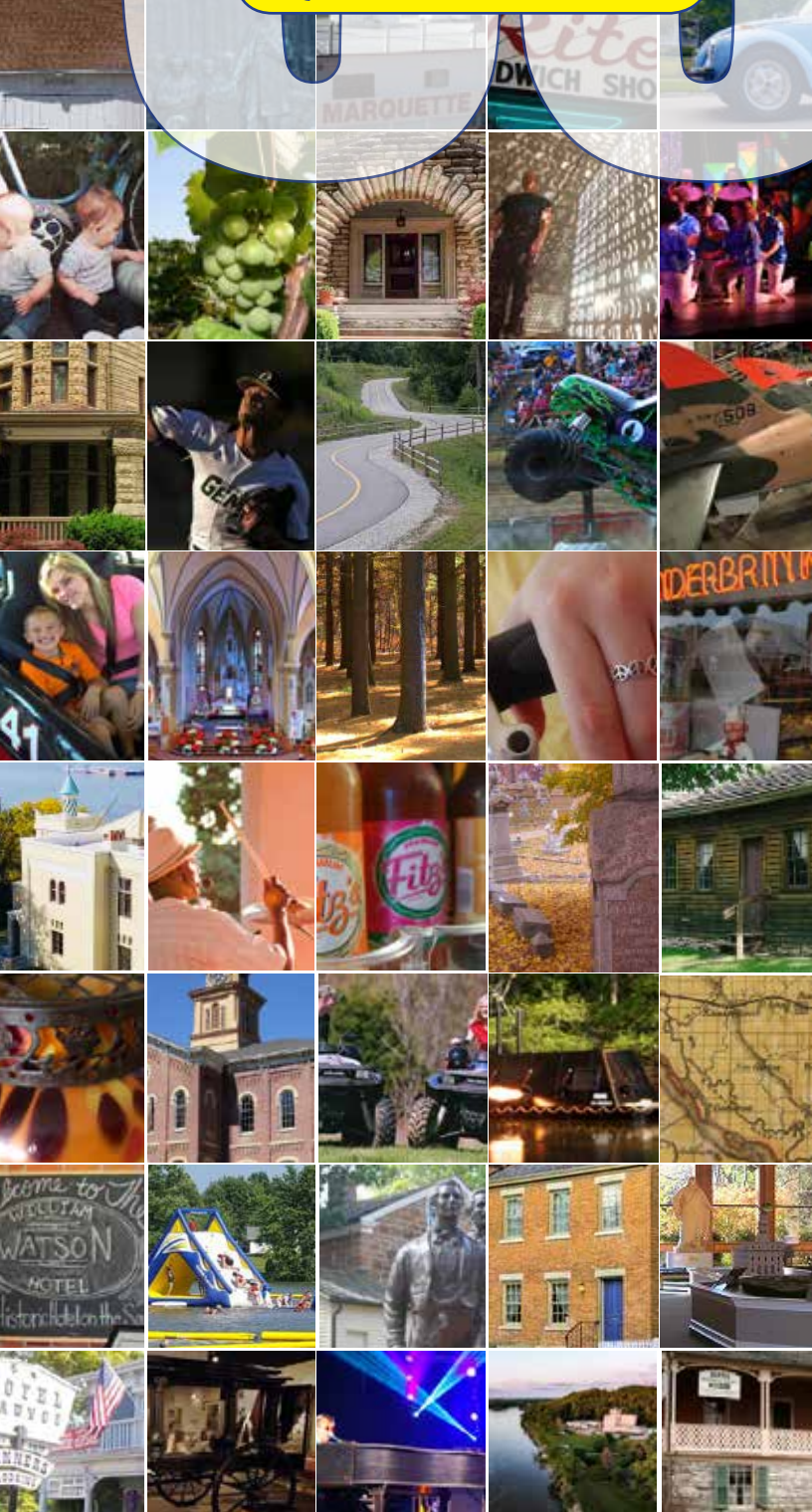


QUINCY IL AREA



GREAT THINGS TO SEE & DO



please take plenty of
pics as you explore

share on our instagram
@SeeQuincyIL

the top attractions in a 3-county area

check off as you go: visit all 50!



QUINCY AREA

- 1 9-11 MEMORIAL
- 2 1930S AG MUSEUM
- 3 ARABIAN WOODS HORSE FARM
- 4 DICK BROTHERS BREWERY DISTRICT
- 5 EELLS HOUSE
- 6 THE HISTORY MUSEUM
- 7 GOLDEN WINDMILL
- 8 ILLINOIS VETERANS HOME
- 9 JOHN WOOD MANSION
- 10 KROC CENTER
- 11 LEWIS ROUND BARN
- 12 LOCK & DAM 21
- 13 MAID-RITE SANDWICH SHOP
- 14 MAINE STREET MILE
- 15 MILL CREEK FARM
- 16 MISSISSIPPI VALLEY WINE TRAIL
- 17 PRIVATE HOME TOURS
- 18 QUINCY ART CENTER
- 19 QUINCY COMMUNITY THEATRE
- 20 QUINCY GEMS BASEBALL
- 21 QUINCY MUSEUM
- 22 QUINCY PARK DISTRICT/BILL KLINGNER TRAIL
- 23 QUINCY RACEWAYS
- 24 QUINCY REGIONAL AIRPORT/
WORLD AEROSPACE MUSEUM
- 25 SCOTTIES FUN SPOT
- 26 ST FRANCIS CATHOLIC CHURCH
- 27 SILOAM SPRINGS STATE PARK
- 28 TOUR QUINCY BIKES
- 29 UNDERBRINK'S BAKERY
- 30 VILLA KATHRINE
- 31 WASHINGTON PARK/LINCOLN-DOUGLAS
DEBATE INTERPRETIVE CENTER
- 32 WINKING'S MARKET
- 33 WOODLAND CEMETERY

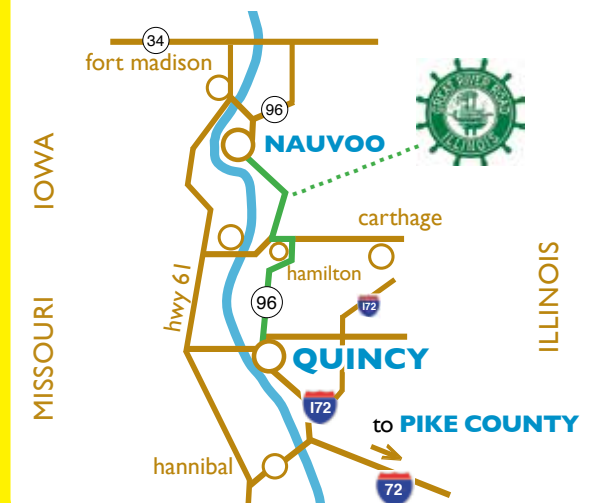
PITTSFIELD AREA

- ABE LINCOLN'S TALKING HOUSES 34
- PIKE COUNTY COURTHOUSE 35
- EAST SCHOOL MUSEUM 36
- HARPOLE'S HEARTLAND LODGE 37
- LAKE PITTSFIELD 38
- NEW PHILADELPHIA 39
- WILLIAM WATSON HOTEL 40
- YOGI BEAR'S JELLYSTONE PARK 41

NAUVOO AREA

- CARTHAGE JAIL 42
- HISTORIC NAUVOO/ 43
- HISTORIC NAUVOO VISITORS CENTER
- HOTEL NAUVOO 44
- KIBBE HANCOCK HERITAGE MUSEUM 45
- THE LEGACY THEATER 46
- NAUVOO STATE PARK 47
- RHEINBERGER & WELD HOUSE MUSEUM 48
- TEN ACRE TREE HOUSES 49
- WARSAW BREWERY 50

QUINCY to nauvoo & pike county: approx 45 miles



SEEQUINCY.COM | 800 978 4748

1

9-11 WAR MEMORIAL

7000 lb section & antenna

located on world trade center tower one when it was attacked sept 11, 2011

designed & manufactured by harris corp at its quincy plant

730 maine (city hall lot)
quincy 62301
217.228.4500
quincyil.gov

free



2

1930s AG MUSEUM

private 45-piece john deere equipment collection

household items typical of a 1930s midwest farmstead

located in a scenic rural setting with a bonus educational video

1435 boyscout rd | quincy
217.440.3036
alt 217.223.5099

by appointment only
free | group-friendly



3

ARABIAN WOODS HORSE FARM

family-friendly, showcasing arabs & half-arabs

dedicated to well-rounded horsemanship for all ages

tours & tutorial camps

1279 e 2385th | camp point
217.430.1690
arabianwoods.com

by appointment only



DICK BROTHERS BREWERY DISTRICT

4

quincy's southside german district, once home to one of the largest U.S. breweries

underground springs and caverns still exist today

history & tunnel tours, event space, museum, + rathskeller (german bar) coming soon

9th-10th on york st | quincy
217.224.9892
dickbrothersbrewery.com

group tours by appt



EELLS HOUSE

5

oldest standing 2-story brick house in quincy

built for prominent doctor and abolitionist, dr. richard eells

underground railroad station credited in aiding several hundred slaves forging north

415 jersey | quincy
217.223.1800

\$3 | sat 1-4p | mar-nov
group tours by appt



THE HISTORY MUSEUM ON THE SQUARE

6

quincy's first free public library

1888 limestone structure overlooking washington park

area history rotating exhibits, edward everett watercolors, stained glass gallery, mormon city of refuge display, sculpture & memorial garden, and gift shop

332 maine | quincy
217.214.1888 | hsqac.org

tues-sat 10a-4p
donations appreciated
self-guided tours
+ group tours by appt



7 GOLDEN WINDMILL

1837 dutch smock windmill

the only restored, U.S.-built windmill operating with its original millstones and wood gear mechanism

a western illinois historic landmark

902 prairie mills rd | golden
217.696.4254 | 217.696.2360
goldenwindmill.org

may-oct: sat/sun 1-4p
**free admission,
donations accepted**



8 IL VETERANS HOME & ALL WARS MUSEUM

one of our nation's largest & oldest veterans homes, dedicated in 1886

all wars museum of 10,000+ military artifacts onsite

deer park and cafe on the grounds are family favorites

1707 n 12th | quincy
217.222.8641

museum open tues-sat
9a-12p & 1-4p | mar-dec 7
free



9 GOVERNOR JOHN WOOD MANSION

restored home of quincy's founder and illinois' twelfth governor

one of the midwest's finest examples of greek revival architecture

1835 log cabin, livery & visitor center also onsite

425 s 12th | quincy
217.222.1835 | hsqac.org

tues, wed, fri 10a-2p
sat 10a-4p
(call ahead for guided tour)

\$8 | \$4 under 18



KROC CENTER 10

state-of-the-art family facility

indoor aquatic & fitness center, rock climbing, kinetic game room, outdoor splashpad

affordable day passes

405 vermont | quincy
217.222.5762
krocquincy.org

mon-fri 5a-10p | sat 7a-8p
sun 9a-6p



LEWIS ROUND BARN MUSEUM 11

the 1914 barn was moved to its current site at the adams county fairgrounds in 2000

80-ft diameter with a 40-ft silo in the center

bonus: one room school house onsite

2007 e 1250th | mendon
217.222.0412

open 2nd sunday monthly
or by appointment



LOCK & DAM 21 12

on the national register of historic places, built 1938

covers 1,075 acres along the mighty mississippi just south of quincy

prime bald-eagle viewing (boat ramp provides the best spot) + seasonal observation deck

909 w lock & dam rd | quincy
217.222.0918

free



13 MAID-RITE SANDWICH SHOP

home of the "loose-meat"
sandwich, enjoyed best with
a homemade milk shake

visited by food network's
alton brown in 2007

served diner style...but no
tipping tolerated!

507 n 12th | quincy
217.222.9767
maid-rite.com

open 7 days a week:
11a-7:30p



14 MAINE STREET MILE

smile, you're on the maine
street mile...quincy's most
notable thoroughfare

30-minute self-guided
driving tour: enjoy art,
architecture and
history in a snap

download or call for your
smile mile guide

seequincy.com
800.978.4748

guides also available at the
tourist info center:
532 gardner expy | quincy



15 MILL CREEK FARM

fresh-picked produce & the
friendliest service around

season: mid-april
to late autumn

pumpkin-picking, corn maze
& hay rides in october

2833 s 48th | quincy
217.222.8430
millcreekfarmquincy.com



MISSISSIPPI VALLEY WINE TRAIL

16



six award-winning wineries:
~baxter's vineyards
~press house winery
~lake hill winery
~spirit knob winery
~village vineyard & winery
~hopewell winery

visit all 6 & receive signature
t-shirt or wine glass

download or call for your
wine trail guide

seequincy.com
800.978.4748
guides also available at the
tourist info center:
532 gardner expy | quincy

PRIVATE HOME TOURS

17



custom private tours in
quincy's exclusive east end
historic district

18 exquisite homes among
the selection, grouped in
neighborhood settings for
walkability

groups of 6+ by reservation
through the Quincy Area
CVB

peruse the online photo
gallery or call for your guide
532 gardner expy | quincy
800.978.4748
seequincy.com
\$5 per home per person

QUINCY ART CENTER

18



center of visual arts,
est. 1923

housed in the former lorenzo
bull carriage house in the
east end historic district

contemporary midwestern
art, rotating exhibits, events
and classes

1515 jersey | quincy
217.223.5900
quincyartcenter.org

\$3 donation

19 QUINCY COMMUNITY THEATRE

delivering top notch performances for the tri-state area since 1923

local, regional and national talent delight crowds with a wide range of theatric variety

shows nearly monthly

300 civic ctr plaza | quincy
217.222.3209
lqct.org



20 QUINCY GEMS BASEBALL

collegiate baseball each summer may-august

prospect league champions
2009, 2011 & 2014

summertime fun for the entire family; full concessions

quincy university stadium
18th & sycamore | quincy
217.214.7436
quincygems.com

home games begin at 6:30p
\$7 adults | \$5 youth/seniors



21 QUINCY MUSEUM

originally the newcombs-stillwell mansion, circa 1891

the museum now contains a beautifully furnished first floor, restored to period 1890s

the second & third floors feature a history room, gallery, gift shop and rotating exhibits

1601 maine | quincy
217.224.7669
thequincymuseum.org
open mar 30-oct 28
tues-sun 1-5p

\$5 adults | \$3 kids



QUINCY PARK DISTRICT & KLINGNER TRAIL 22



30 city parks, including:

~bill klingner trail: new pedestrian trail, front st-24th st
~moorman park: batting cages, mini & disc golf, paddle boating, kayaking
~artificial turf fields for youth baseball/softball
~westview: public 27-hole golf course
~pickleball (moorman & berrian park)
~indian mounds: public pool
~quinsippi island: lincoln-era log cabins, boat slip, marina

1231 bonansinga dr | quincy
217.223.7703
quincyparkdistrict.com

QUINCY RACEWAYS 23



imca late models, a & b modified, sports mods, stock cars & sports compacts

watch for special racing events

races every sunday from april-october at 6p

8000 broadway | quincy
217.242.5055
quincyraceways.com

\$12 adults
(10 & under free with adult)
\$5 student

QUINCY REGIONAL AIRPORT & WORLD AEROSPACE MUSEUM 24



swanky mid-century mod airport terminal designed by john benya c. 1972

upper observation decks & onsite restaurant

aerospace museum on grounds displays aircraft from former soviet blocked countries

1645 hwy 104 | quincy
blue haven cafe: 217.885.3010

museum: 217.885.3800
jet-warbirds.com
by appointment;
group tours avail

25 SCOTTIES FUN SPOT

award-winning family entertainment headquarters

space-themed laser tag, go-karts, mini-lane bowling, roller skating, bumper cars, 19-hole mini golf, ball-o-city and arcade

bonus: winner's grille onsite

8000 broadway | quincy
217.222.3868
scottiesfunspot.com



26 ST. FRANCIS CATHOLIC CHURCH

ornate gothic revival style, built 1884 at a cost of \$62,000

stunning interior murals and extensive white marble adorn the sanctuary

bonus: shares the block with underbrink's bakery

1721 college | quincy
217.222.2898
stfrancissolanus.com

individual viewings available
+ group tours by appt



27 SILOAM SPRINGS STATE PARK

nature lover's paradise of 3,323 acres

wooded terrain with scenic trails, bird watching, picnicking, camping and hunting

sparkling lake offering fishing plus boat rentals

938 east 3003rd lane | clayton
217.894.6205
dnr.state.il.us



TOUR QUINCY BIKES 28

see quincy via bikes!

2 hours **for free** in 2020
choose a tandem or 2 treks
mon-fri 9a-7p

available at the villa kathrine,
quincy's tourist info center

532 gardner expy | quincy
seequincy.com

reservations recommended
> text : 217.242.3728
> call : 800.978.4748 OR
> email : info@seequincy.com

basket, helmets, locks included



UNDERBRINK'S BAKERY 29

authentic working german bakery since 1929

famous for melt-in-your mouth angel food cupcakes, danishes, pies & cookies

antique baking equipment & cases furnish the interior

1627 college | quincy
217.222.1831 | underbrinks.com
tues-fri 7a-3p | sat 7a-12p

behind-the-scenes group tours by appointment (weekdays only)



VILLA KATHRINE 30

mediterranean castle built on the mississippi bluffs in 1900 for world traveler, george metz

stunning interior courtyard with reflecting pool

now quincy's tourist info ctr & gift shop, and the quincy area cvb offices

532 gardner expy | quincy
217.224.3688
thevillakathrine.org

mon-sat 9a-5p | sun 1a-5p
(closes at 4p nov-mar)
self-guided tours \$3 adults



31 WASHINGTON PARK

the city's original central square, est. 1825, and the site of the 6th lincoln-douglas debate, 1858

current hub of festivals, farmers market, summer blues concerts and lincoln storyboards

5th & maine | quincy
217.223.7703
quincyparkdistrict.com

across from the lincoln-douglas debate interpretive center & district offices
128 n 5th | 217.228.8696
mon-fri 8:30-4:30p | free



32 WINKING'S MARKET

quincy's iconic "mom & pop" corner grocery and carry-out deli since 1948

a lunchtime favorite with cold cut sandwiches, hot soups and ice cold pop

kids love the penny candy corner and all who enter love the friendly "winking" service

416 s 4th | quincy
217.223.4764
winkingsmarket.com

mon-fri 7:30a-6p | sat 9a-3p

33 WOODLAND CEMETERY

among the midwest's most beautiful cemeteries; ancient hardwoods and panoramic mississippi views

planned by quincy's founder, john wood, circa 1846

a stately mausoleum graces the site where a civil war hospital once stood

1020 s 5th | quincy
217.222.2412

historical society of adams county annual tours
217.222.1835



ABE LINCOLN'S TALKING HOUSES 34



driving audio tour of 15 lincoln-significant buildings in pittsfield (set your radio)

tour may be started at the visitors center (below)

224 w washington
pittsfield | 217.285.2971
pikelincoln.com
free

PIKE COUNTY COURT HOUSE 35



fashioned of cleveland stone & built by master mason, robert franklin in 1894

lincoln & douglas spoke in this courtyard in the 1858 senatorial campaign

on the national register of historic places

100 e washington st
pittsfield | 217.285.6812
pikeil.org

EAST SCHOOL MUSEUM 36



constructed during the civil war as "the county's school", allowing rural students to board in local homes during the winter

Now houses a collection of historical items, including the overalls of robert earl hughes, guinness world book of records' heaviest man c. 1950s

400 e jefferson
pittsfield | 217.370.0904
pikeil.org | seasonal | free

HARPOLE'S HEARTLAND LODGE 37



a polaris adventure destination: largest ATV/UTV park in illinois

80+ miles of trails; bring your own or rent the newest side by side models

horseback riding, hayrides, mountain bikes + delicious home cooked meals in a peaceful setting

celebrating 25 years!

10236 393rd st | nebo
217.734.2526
heartlandlodge.com

38 LAKE PITTSFIELD

480-acre recreational park with 200-acre lake

boating, fishing, camping, hiking, picnicking, tennis, softball, soccer, shelters

lincoln days civil war re-enactment held here first weekend of june annually

2 miles east of us 54 & 1.5 miles north of IL 106
217.285.4484 | pittsfieldil.org



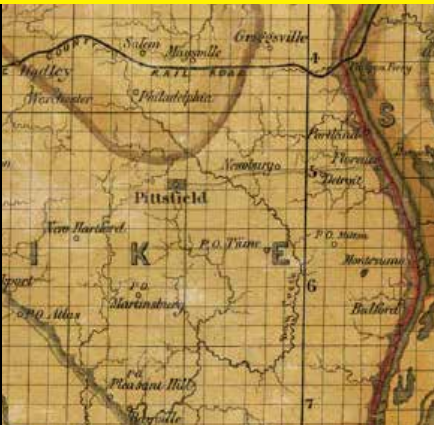
39 NEW PHILADELPHIA

an integrated community founded in 1836 by frank mcworter; who purchased his own freedom

first pre-civil war town est. by a free african american

listed on the national register of historic places

295th ave | barry | 217.285.2971
newphiladelphail.org



40 WILLIAM WATSON HOTEL

frequented by lincoln in the 1800s, the structure is now a beautifully restored boutique hotel with 14 spacious rooms

freepress coffee is adjacent to the hotel's lobby offering a full menu of coffee drinks & pastries

107 e washington | pittsfield
217.285.6030
williamwatsonhotel.com



41 YOGI BEAR'S JELLYSTONE PARK AT PINE LAKES

105-acre campground with 45-acre stocked lake

fishing (no license required), beach swimming, hiking, boat rentals, hay rides, playground, volleyball

cottages and camping

1405 lakeview heights | pittsfield
217.285.6719
jellystonepinelakes.com



CARTHAGE JAIL & VISITORS CENTER 42



old carthage jail, built 1839

martyr site of latter-day saint movement founder, joseph smith, and his brother hyrum

the property was sold to the church of jesus christ of latter-day saints in 1938 and is now open to visitors

310 buchanan st | carthage
217.357.2989

HISTORIC NAUVOO & HISTORIC NAUVOO VISITORS CENTER 43



over 40 historic sites, hands-on activities, pioneer games, and a horse-pulled wagon ride through town (**free**)

350 n main | nauvoo
217.453.2419

guided walking tours begin at the center, starting with a short film & continuing through smith family homes



exquisite monument to women garden on the grounds

865 water st | nauvoo
217.453.2246

historiconauvoo.net
video & museum exhibits free

HOTEL NAUVOO 44



historic inn & restaurant operated by the kraus family through four generations

internationally known for its award-winning buffet, the buffet features southern fried chicken, carved roast beef & the inn's signature wild rice dressing

the restaurant boasts five dining rooms, each reflecting a different era of nauvoo's history

1290 mulholland st | nauvoo
217.453.2211
hotelnauvoo.com
(open seasonally)

45 KIBBE HANCOCK HERITAGE MUSEUM

impressive collection of civil war and indian artifacts, fashion items circa 1840-1920, geodes, fossils, rocks and other historic hancock county artifacts

also houses abe lincoln displays and a funeral customs display

listed among "10 creepy museums of the world": urbanghostsmidia.com

306 walnut | carthage
217.357.9552



46 THE LEGACY THEATER

a community showcase, the theater underwent a \$3.3 million renovation in 2009/10

525-seat performance venue for arts, learning and entertainment

world-class shows throughout the year

1160 buchanan st | carthage
217.357.9479
thelegacytheater.com



47 NAUVOO STATE PARK

on the mississippi banks, the 148-acre park includes a 13-acre lake with a mile-long shore line

fishing, boating, camping, hiking, plus the nauvoo grape festival each labor day weekend

nauvoo's first vineyard also occupies the grounds producing grapes since the 1800s (see baxter's, p. 6)

980 bluff st | nauvoo
217.453.2512 | dnr.state.il.us



RHEINBERGER MUSEUM & WELD HOUSE MUSEUM 48

two unique venues dedicated to preserving nauvoo's history

rheinberger has its original wine cellar, lincoln room, quilt room & icarian room

weld house features items from quashquema to present, river history, 900-piece arrowhead collection and pioneer artifacts

4011 kimball | nauvoo
217.453.2599
1380 mulholland | nauvoo
217.453.6590



TEN ACRE TREE HOUSES 49

off-grid lodging nestled in a ten-acre forest 8 miles outside historic nauvoo

semi-primitive tree houses with 360-degree views plus a reclaimed 1800s log cabin with a cozy wood burning fireplace

a truly secluded respite with rave reviews for a magical stay

1825 n county rd 900 | nauvoo
217.440.8006
tenacreetreehouses.net



WARSAW BREWERY 50

originally established 1860, the structure's witnessed a colorful history, including the rise and fall of prohibition

restored by its current owners in 2017, now a full restaurant & bar with a killer "build-a-burger" menu

on the scenic mississippi bluffs along the great river road

900 n 5th | warsaw
217.505.1009
warsawbreweryllc.com
(open seasonally)



art

hits the wall

MURAL FIND + DINE GUIDE

*an artistic celebration
of the beauty & power of diversity & community*

self-guided driving/riding tour
exploring 24 city murals
+ appetizing eats & sips along the way

shown : creation of the world
#11 on the tour